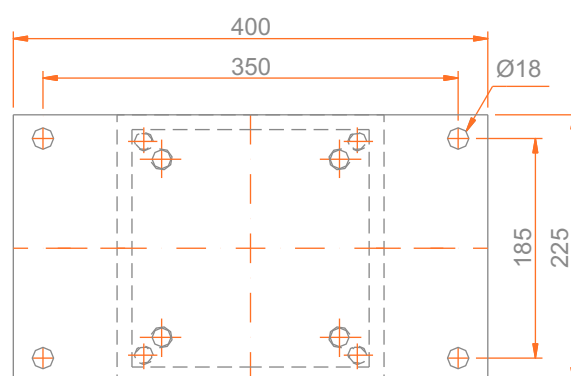
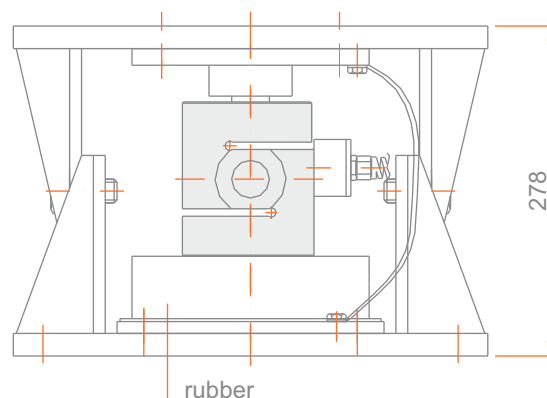
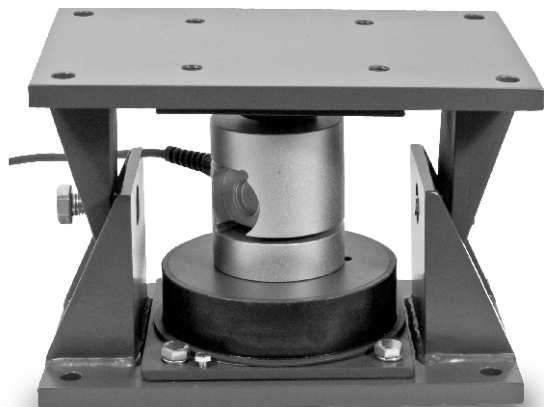
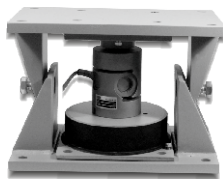
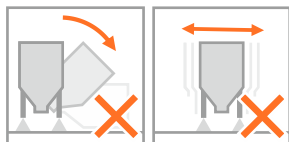


Type SC-ELT / CA-ELT

ESIT

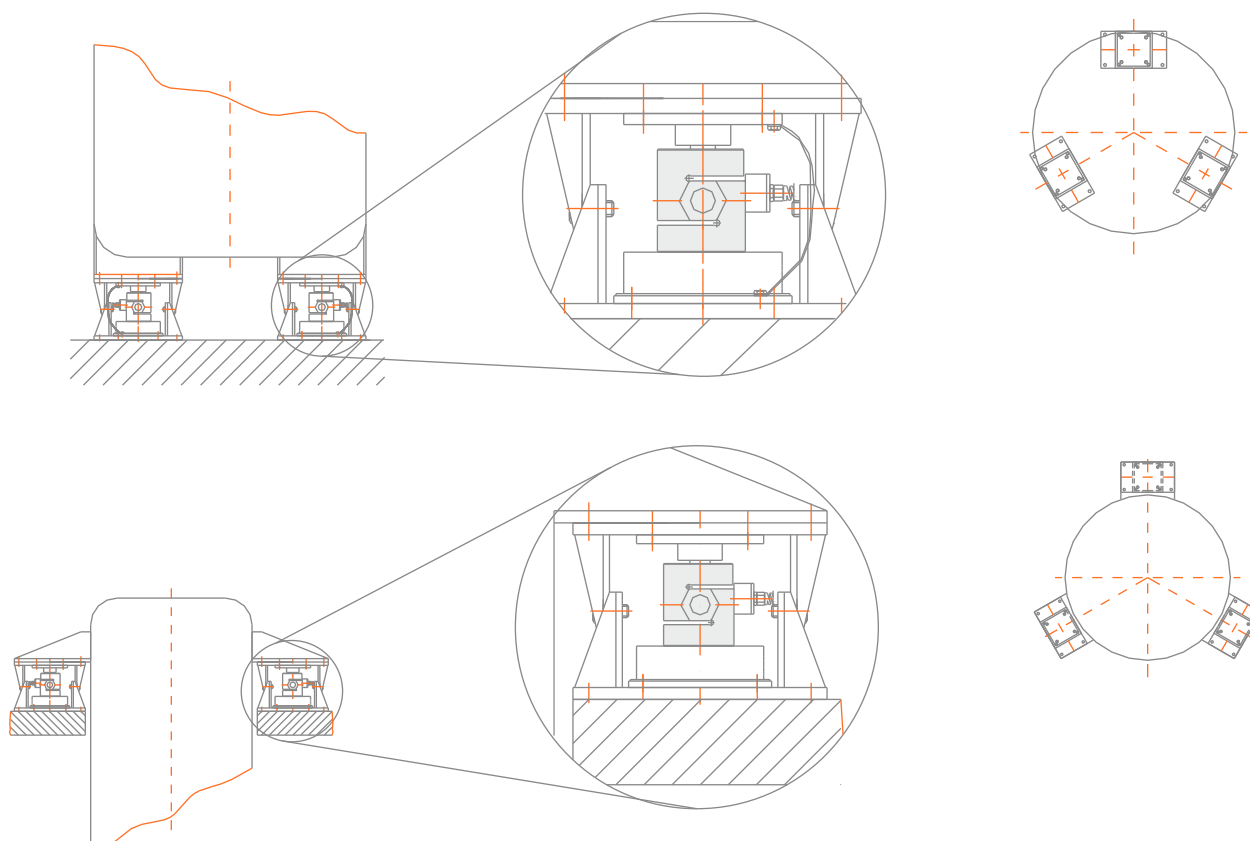
Elastomer Tank Mounting Kit

(All dimensions are expressed in millimeters)



Avoids toppling or displacement of the load with the ground fixing system
Protects the load cell against side forces and impact loads
Eliminates problems arising from thermal expansion
Corrects off-center loads
Protects the load cell against leakage currents with a grounding cable
Maintains a stable measurement in weighing systems where vibrations and impact loads are present

Application Graphic



Esit reserves the right to modify, without prior notice, the products in accordance with technological developments.

ESIT