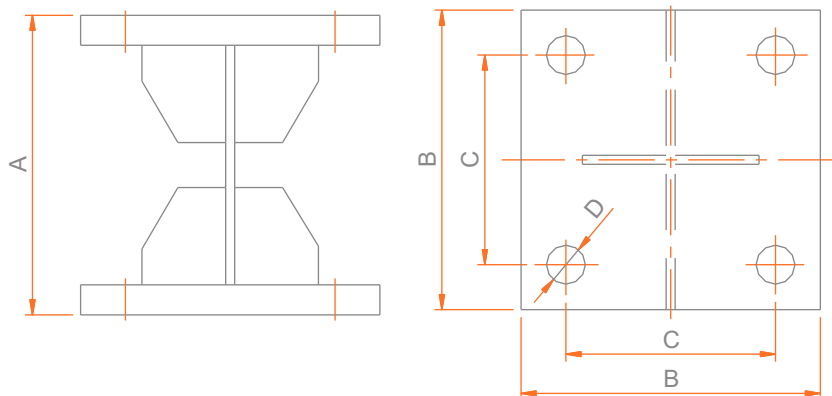
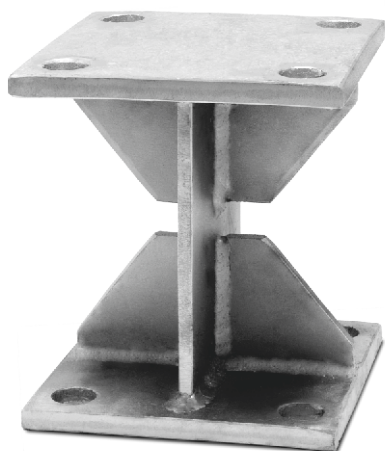


Type TM-ET

Flexible Conveyor

ESIT

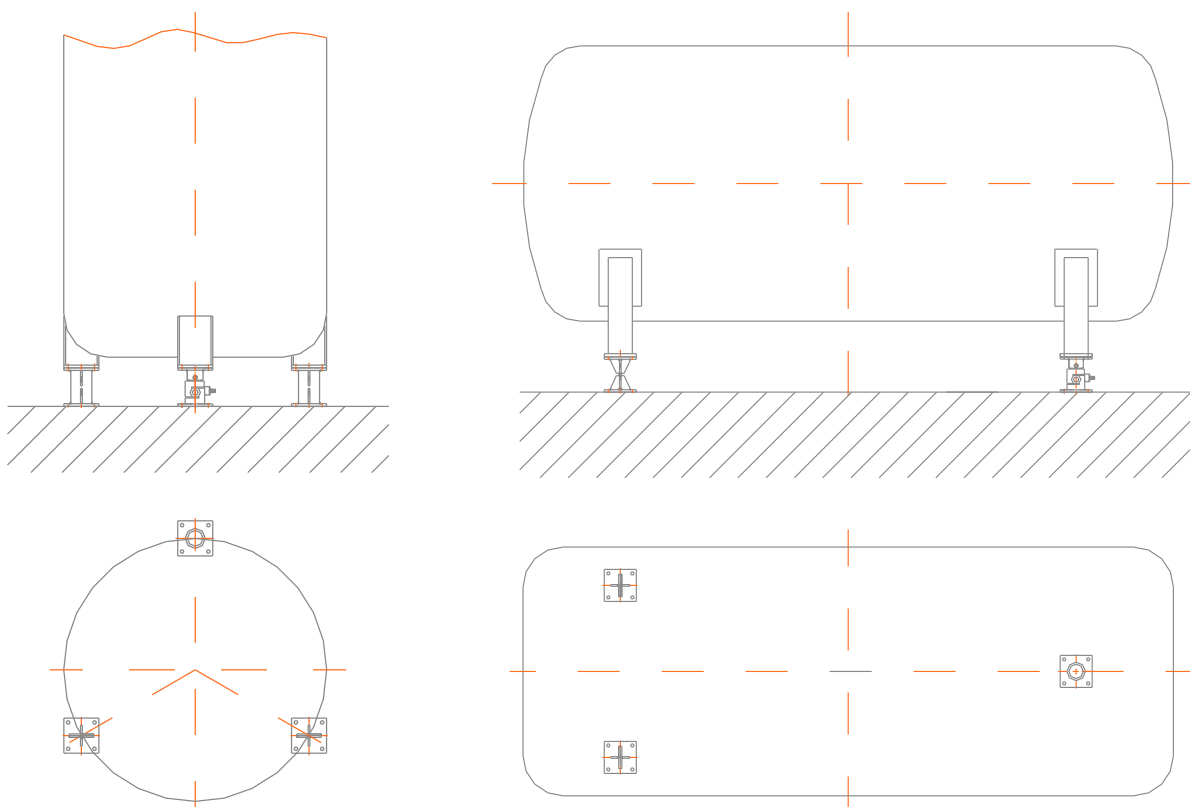
(All dimensions are expressed in millimeters)



Esit ET flexible conveyor is an economic solution for weighing of liquid or gas tanks, which do not require an accuracy of more than 1/1000. A combination of one load cell and two flexible conveyors is suitable for tanks connected at three points whereas for tanks connected at four points, this combination shall include two load cells and two flexible conveyors. The flexible conveyor can be used with Esit TM, EL and ELT mounting kits.

Type	A	B	C	ØD
SSB5-TM ET	150	130	95	18
SSB10-TM ET	150	150	110	18
SC-TM ET	220	200	150	18
HSC-TM ET	210	300	200	20

Application Graphic



Esit reserves the right to modify, without prior notice, the products in accordance with technological developments.